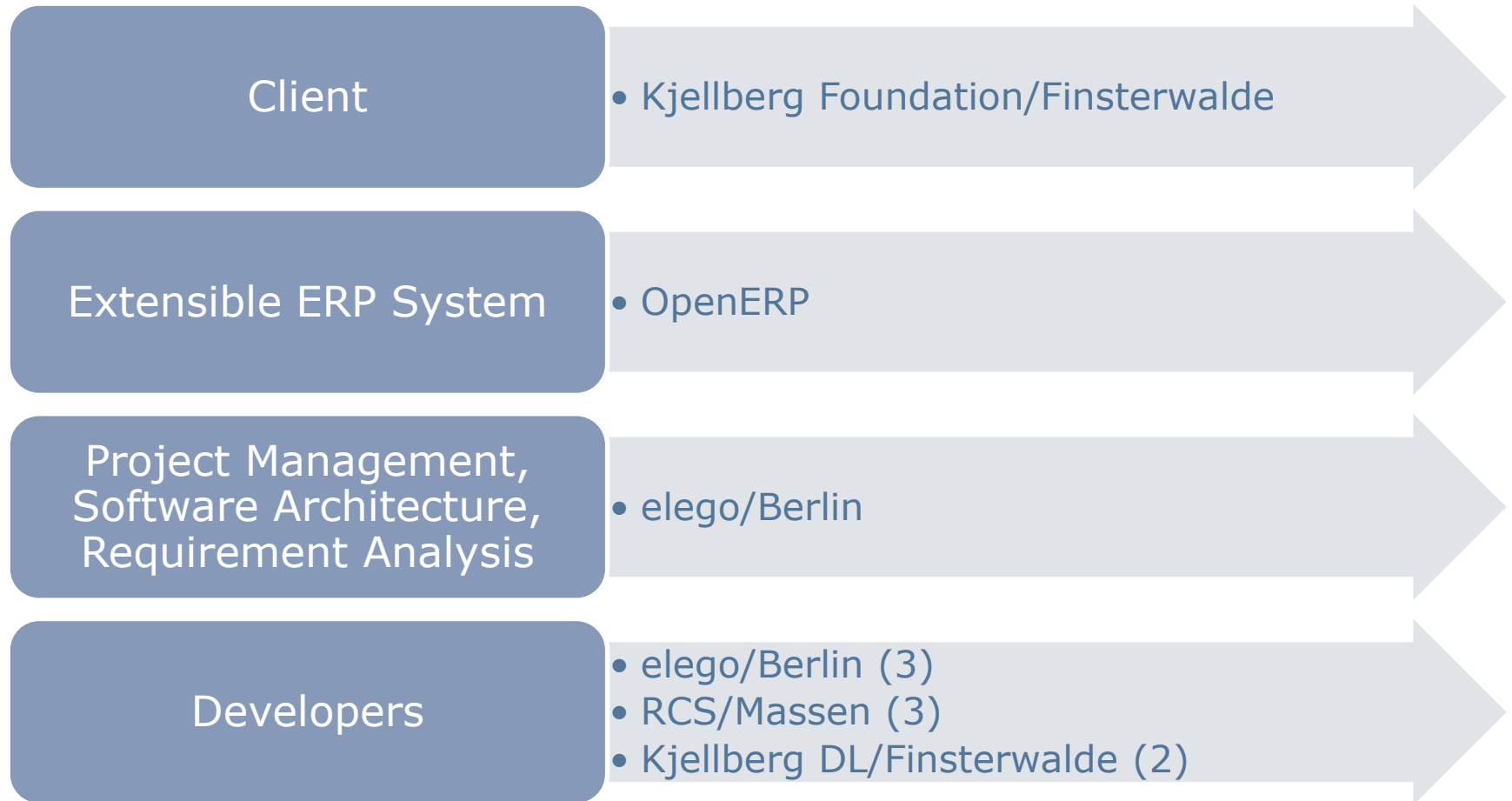


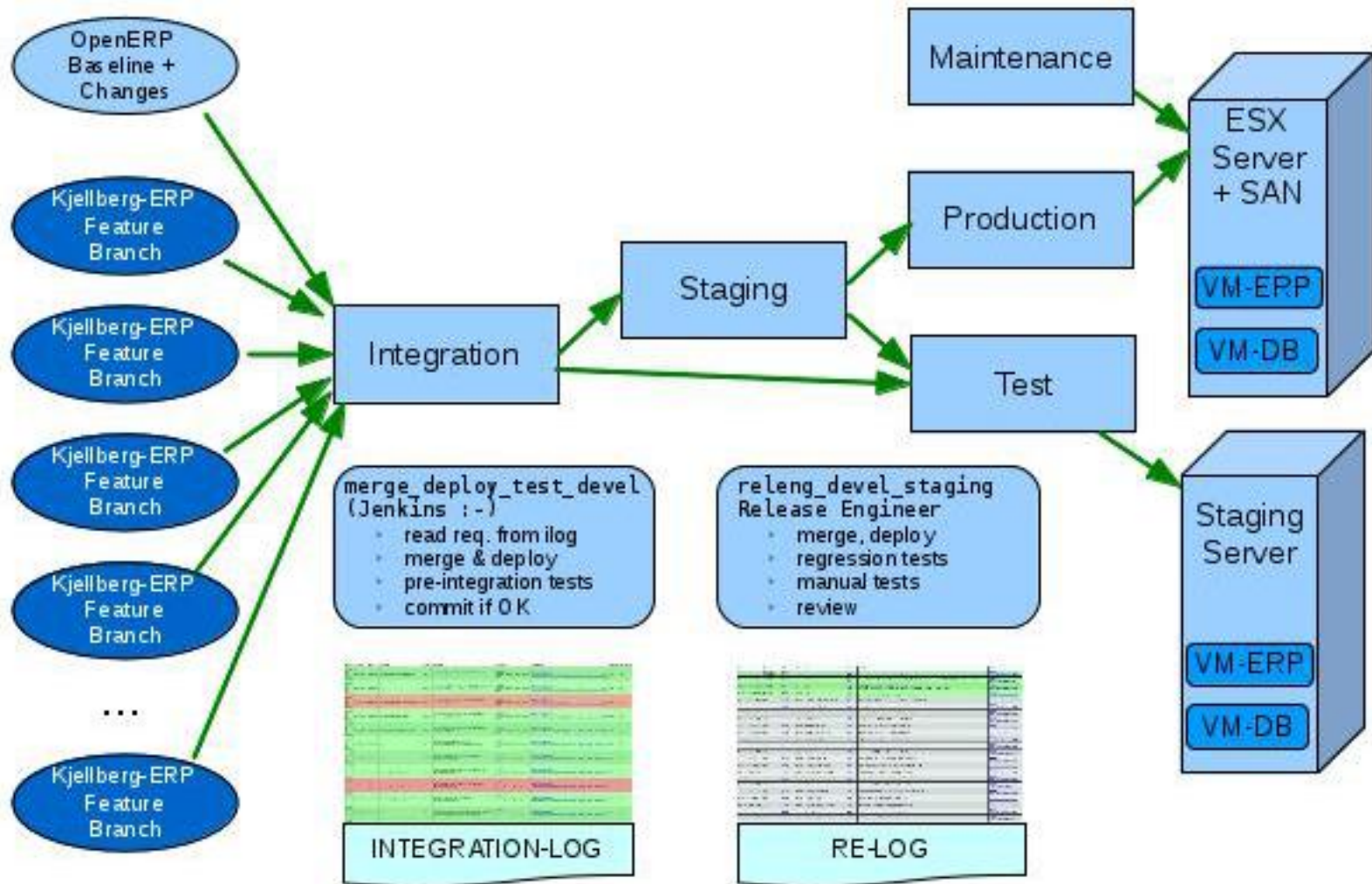


# Continuous Integration, Test, and Deployment of an OpenERP-based Project

Michael Götz-Schneider

elego Software Solutions GmbH - © 2013





### Developer

- Checks out a version of OpenERP 7.0
- Code the addon and test
- Commit and push the addon to the repository

### CI Server

- Detects the new or changed feature branch
- Merges the changes into a workspace copy of the integration branch
- Runs regression tests
- Merges the feature branch into the integration branch, unless a regression is detected

## Project merge\_deploy\_test\_devel

### Integration Status Features

Date	Status	Repo	Branch/Issues/Hints	RevNo	Tests/Errors	Release	Revision Id/Build Ref
2013-05-07-06-26-22	REJECTED	addons	kjellberg_stock_print_product_attachments	<a href="#">9095</a>	/		am@rcs.de-20130506152301-nccwu3ix4tyk1jo8 <a href="#">jenkins-find_addons_changes_devel-1343</a>
2013-05-06-12-23-32	MERGED	addons	kjellberg_legierung_zuschlaege issue <a href="#">1569</a>	<a href="#">8591</a>	433/0		yweng@elegosoft.com-20130506102854-x1di0gtqlhz18 <a href="#">jenkins-merge_deploy_test_devel-2174</a>
2013-05-06-11-56-26	MERGED	addons	kjellberg_fix_split_round issue <a href="#">1527</a>	<a href="#">9009</a>	433/0		yweng@elegosoft.com-20130506095925-scwfs0q4u4xs <a href="#">jenkins-merge_deploy_test_devel-2173</a>
2013-05-06-11-33-03	MERGED	addons	kjellberg_product_uomconvert issue <a href="#">1527</a>	<a href="#">8643</a>	433/0		yweng@elegosoft.com-20130506095539-89qgae9r5d8l <a href="#">jenkins-merge_deploy_test_devel-2172</a>
2013-05-06-11-09-23	MERGED	client	kjellberg_layout issue <a href="#">1510</a>	<a href="#">3726</a>	433/0		iberaki@elego.de-20130506095341-pjm014jsw7mpym4 <a href="#">jenkins-merge_deploy_test_devel-2171</a>
2013-05-06-09-32-50	MERGED	addons	kjellberg_roles issue <a href="#">1237</a>	<a href="#">9007</a>	433/0	1.3.2	yweng@elegosoft.com-20130506085904-97h20138q97 <a href="#">jenkins-merge_deploy_test_devel-2168</a>
2013-05-06-08-41-49	REJECTED	addons	kjellberg_stock_print_product_attachments	<a href="#">9094</a>	/		launchpad_translations_on_behalf_of_openerp-2013050 <a href="#">jenkins-find_addons_changes_devel-1338</a>

ILOG Status:

**NEW:** tests pending

**TESTING:** tests are being performed

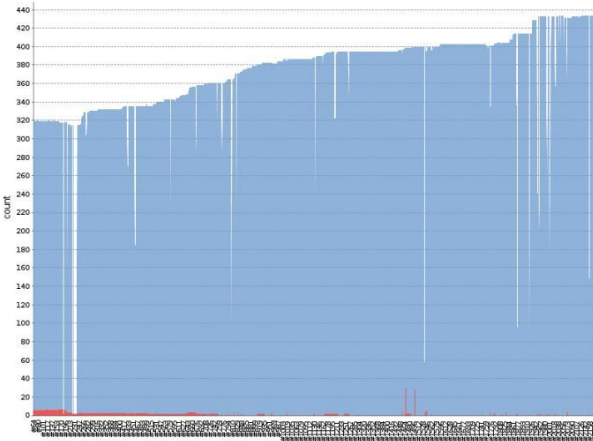
**TESTED:** tests completed

**FAILED:** test run aborted due to critical error, not merged

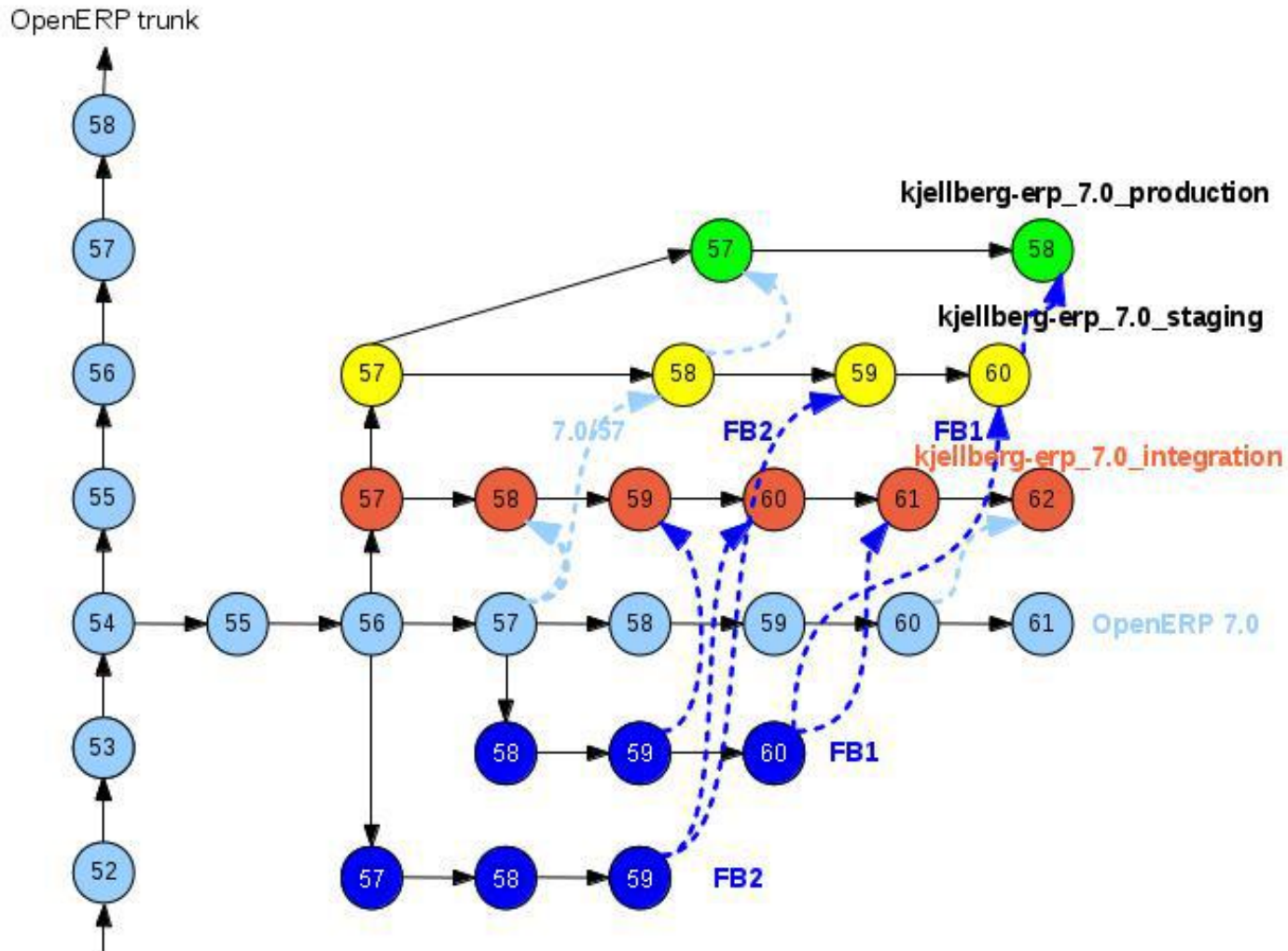
**REJECTED:** integration rejected because of regression

**MERGED:** tests passed without regression, changes merged





Coverage report:	<b>60%</b>			
<b>Module</b>	<b>statements</b>	<b>missing</b>	<b>excluded</b>	<b>coverage</b>
lib/addons/upstream/account/_init__	19	0	0	100%
lib/addons/upstream/account/account	1866	851	0	54%
lib/addons/upstream/account/account_analytic_line	88	24	0	73%
lib/addons/upstream/account/account_bank	56	2	0	96%
lib/addons/upstream/account/account_bank_statement	289	171	0	41%
lib/addons/upstream/account/account_cash_statement	161	62	0	61%
lib/addons/upstream/account/account_financial_report	58	4	0	93%
lib/addons/upstream/account/account_invoice	1073	287	0	73%
lib/addons/upstream/account/account_move_line	863	312	0	64%
lib/addons/upstream/account/company	6	0	0	100%
lib/addons/upstream/account/edi/_init__	1	0	0	100%
lib/addons/upstream/account/edi/invoice	121	22	0	82%
lib/addons/upstream/account/installer	99	43	0	57%
lib/addons/upstream/account/ir_sequence	19	2	0	89%
lib/addons/upstream/account/partner	89	38	0	57%
..				



## Project releng\_devel\_staging

Staging Integration Status ---- This GUI is for release engineers only ----

Date	Status	Actions	Repo	Branch/Issues	RevNo	RevId
2013-05-07-08-31-52	MERGED/ OUTDATED	<a href="#">Merge</a> <a href="#">Revert</a> <a href="#">Reset</a>	addons	7.0	<a href="#">9097</a> <a href="#">9073</a>	qdp-launchpad@openerp.com-20130507065125-4byqfqr20w9g9xxc tde@openerp.com-20130425093953-ech46xrbjjupn3j
2013-05-07-08-31-30	MERGED/ OUTDATED	<a href="#">Merge</a> <a href="#">Revert</a> <a href="#">Reset</a>	client	7.0	<a href="#">3919</a> <a href="#">3907</a>	launchpad_translations_on_behalf_of_openerp-20130507061422-tcg launchpad_translations_on_behalf_of_openerp-20130423061019-n2
2013-05-06-12-39-01	TESTING	<a href="#">Revert</a> <a href="#">Confirm</a> <a href="#">Reset</a>	addons	kjellberg_product_uomconvert <a href="#">665</a> <a href="#">670</a> <a href="#">721</a> <a href="#">1320</a> <a href="#">1324</a> <a href="#">1361</a> <a href="#">1379</a> <a href="#">1397</a> <a href="#">1481</a> <a href="#">1525</a> <a href="#">1527</a> fspec: <a href="#">508</a> <a href="#">323</a> <a href="#">665</a>	<a href="#">8643</a>	yweng@elegosoft.com-20130506095539-89qgae9r5d88rkrs
2013-05-06-12-37-22	TESTING	<a href="#">Revert</a> <a href="#">Confirm</a> <a href="#">Reset</a>	addons	kjellberg_legierung_zuschlaege <a href="#">1305</a> <a href="#">1372</a> <a href="#">1390</a> <a href="#">1391</a> <a href="#">1418</a> <a href="#">1569</a> fspec: <a href="#">578</a> <a href="#">324</a>	<a href="#">8591</a>	yweng@elegosoft.com-20130506102854-x1di0gtq1h2l8uo6
2013-05-06-12-36-29	TESTING	<a href="#">Revert</a> <a href="#">Confirm</a> <a href="#">Reset</a>	addons	kjellberg_fix_split_round <a href="#">1415</a> <a href="#">1527</a>	<a href="#">9009</a>	yweng@elegosoft.com-20130506095925-scwfs0q4u4xsnmmd
2013-05-06-11-31-42	MERGED/ OUTDATED	<a href="#">Merge</a> <a href="#">Revert</a> <a href="#">Reset</a>	client	kjellberg_layout <a href="#">1257</a> <a href="#">1328</a> <a href="#">1387</a> <a href="#">1510</a>	<a href="#">3726</a> <a href="#">3725</a>	iberaki@elego.de-20130506095341-pjm014jsw7mpym48 iberaki@elego.de-20130327094336-m8hmzsm1o1874aih

## Workspace Status

Update View

[Open RE-LOG in own window/tab](#)



## Workspace Status

Update View

[Open RE-LOG in own window/tab](#)

Server	Client	Addons
<a href="#">4864_wagner@elego.de-20130425201150-mp7qt1i00kxug3od</a>	<a href="#">3800_wagner@elego.de-20130425180333-k4ch1h2ipucmvrbm</a>	<a href="#">9196_wagner@elego.de-20130506123903-0a3deads0n5p7noq</a>
Missing/Extra wrt. <b>kjellberg-erp_7.0_staging</b>		
		<a href="#">9196</a> <a href="#">9195</a> <a href="#">9194</a> <a href="#">9193</a> <a href="#">9192</a> <a href="#">9191</a> extra local revisions
Pending Requests		
<a href="#">merge addons kjellberg_fix_split_round 9009 yweng@elegosoft.com-20130506095925-scwfs0q4u4xsnmmd</a>		

Status	Update/Deploy/Test	Commit/Revert/Push	History
Rebuild Log	Update All Outdated	Revert Pending Changes	3695 rebuild none none
Local VC Status	Update Outdated Kj.Features	Revert All Local Changes	3694 rebuild none none
Local Diff's	Merge New Kj.Features	Uncommit Last Change	3693 rebuild none none
Update Commit Logs	Resolve TC/Take Incoming	Confirm Pending Changes	3692 rebuild none none
Show Text Conflicts	Resolve TC/Take Local	Confirm All Testing	3691 rebuild none none
Add Issues from ILOG	Deploy Test Service		3690 rebuild none none
Pending Changes Table	Run Tests Directly		3689 rebuild none none
	Run Regression Test Job	Push Local Changes	3688 rebuild none none

**Local Commit Logs:** [Server Branch Log](#) [Client Branch Log](#) [Addons Branch Log](#)

**Loggerhead Logs:** [Server Branch Log](#) [Client Branch Log](#) [Addons Branch Log](#)

**Service Logs:** [Test Service Log](#) [Staging Service Log](#)

## Project releng\_devel\_production

### Release Engineering of the production branches

#### Releases

Release	Server	Client	Addons
<a href="#">1.3.2</a> <a href="#">checkout</a>	4864 wagner@elego.de - 20130425201150 - mp7gt1i00kxug3od	3737 wagner@elego.de - 20130506101035 - uvb1nhw1dip1176k	8789 wagner@elego.de - 20130506101035 - yrpb88tuiz0cw38i
<a href="#">1.3.1</a> <a href="#">checkout</a>	4864 wagner@elego.de - 20130425201150 - mp7gt1i00kxug3od	3736 wagner@elego.de - 20130503162417 - si1fpxccyil2znju	8787 wagner@elego.de - 20130503162417 - l85p6few1t9h1qfi
<a href="#">1.3</a> <a href="#">checkout</a>	4864 wagner@elego.de - 20130425201150 - mp7gt1i00kxug3od	3735 wagner@elego.de - 20130425223344 - moccxbl2tn9uv5sf	8786 wagner@elego.de - 20130425223344 - gsebbxt0ojdrcjg6
<a href="#">1.2</a> <a href="#">checkout</a>	4832 wagner@elego.de - 20130410160941 - uno0bl2ouvvkiz84	3733 wagner@elego.de - 20130412132818 - o4ib2xsqxxlzz51t	8785 wagner@elego.de - 20130412132818 - ih43z07199h31xls
<a href="#">1.1.1</a> <a href="#">checkout</a>	4802 wagner@elego.de - 20130314230312 - z6t1wq4i7os5ujw6	3731 wagner@elego.de - 20130315203937 - sfrbatmawug7iifc	8784 wagner@elego.de - 20130315203937 - b3bzsq0cteihqrrd

## Workspace Status

Update View

Server	Client	Addons
<a href="#">4864_wagner@elego.de-20130425201150-mp7qt1i00kxug3od</a>	<a href="#">3737_wagner@elego.de-20130506101035-uvb1nhw1dlp1176k</a>	<a href="#">8789_wagner@elego.de-20130506100303-yrbp88tuiz0cw38i</a>
Missing/Extra wrt. kjellberg-erp_7.0_production		
Missing/Extra wrt. kjellberg-erp_7.0_staging		
	<a href="#">3737_3736_3735_3734 [merge] 3733_3732 [merge] 3731_3730_3729 [merge] 3728 [merge] 3727 [merge] 3726 [merge] 3725</a>	<a href="#">8789 [merge] 8788 [merge] 8787 [merge] 8786 [merge] 8785 [merge] 8784 [merge] 8783</a>
	extra local revisions	extra local revisions

Status	Workspace Actions	Global Actions	History
Local VC Status	Revert All Local Changes	Push Local Changes	1952 status
Local VC Diffs	Pull From Staging	Deploy Release	1951 deploy-ws-to-staging
Show Missing Versions	New Major Release	Run Regression Test Job	1950 push-all
Update REL/CS Info	New Minor Release	Deploy Staging from WS	1949 new-patch-rel
Scan Logs for Issues	New Patch Release	Deploy Test from WS	1948 status
Get Defect List	Update Head		1947 pull-from-staging
	Commit All Pending		1946 status
			1945 status
			1944 pull-from-staging

Service Logs: [Test Service Log](#) [Staging Service Log](#) [Production Service Log](#)



## Release Issues:

<u>Id</u>	<u>Tracker</u>	<u>Status</u>	<u>Title</u>
<a href="#">322</a>	Feature	Closed	[KEZ User Story Impl. Vertrieb] Der Verkäufer will voraussichtliche Lieferzeiten bestimmen (muss)
<a href="#">721</a>	Feature	Resolved	[KEZ User Story Vertrieb] Der Verkäufer will eine "X-Zeile" in einem Auftrag angelegen können
<a href="#">788</a>	Feature	Closed	Test Ausstellungsdatum und Lieferscheinnummer im Wareneingang
<a href="#">1140</a>	Feature	New	[KMF User Story Lager] Der Lagerist will Begleitpapiere für Verkaufsartikel ausdrucken
<a href="#">1237</a>	Feature	Rework	Zentral Definierte Kjellberg Rollen
<a href="#">1391</a>	Feature	Rework	[KEZ User Story Vertrieb] Der Verkäufer druckt Rechnungen mit Legierungszuschlägen
<a href="#">1554</a>	Defect	Closed	External ID Konflikt

## Open Defects:

<u>Id</u>	<u>Tracker</u>	<u>Status</u>	<u>Title</u>
<a href="#">1569</a>	Defect	New	Fehler beim Erzeugen einer Rechnung
<a href="#">1552</a>	Defect	New	Beim Anlegen von Fertigungsauftrag kommt Fehlermeldung bei neu angelegten Produkten.
<a href="#">1543</a>	Defect	New	Keine Auftragsnummer für neue Aufträge aus der Kalenderübersicht
<a href="#">1538</a>	Defect	New	Fertigung - Fertigungsauftrag abbrechen erzeugt Fehler
<a href="#">1527</a>	Defect	Resolved	Fehler beim Aufteilen über UoM-Convert
<a href="#">1486</a>	Defect	New	Layout-Problem Pflichtfelder
<a href="#">1466</a>	Support	Resolved	[CI] Fehlerhafte Auswertung erwarteter Fehler
<a href="#">1465</a>	Defect	New	Verfügbarkeit bei Internen Lieferungen

## Release Changesets:

<u>Date</u>	<u>Repo</u>	<u>Branch</u>	<u>RevNo</u>	<u>Issue</u>	<u>Log</u>
2013-04-26-09-24-18	addons	kjellberg_report_sales	<a href="#">8721</a>	<a href="#">322</a>	[FIX] added Changes from main branch issue 721 Use --include-merged or -n0 to see merged revisions.
2013-05-05-22-25-09	addons	kjellberg_roles	<a href="#">9006</a>	<a href="#">1237</a>	issue 1237 add roles for KEZ users
2013-05-06-09-32-50	addons	kjellberg_roles	<a href="#">9007</a>	<a href="#">1237</a>	issue 1237 set noudate
2013-04-26-15-01-14	addons	kjellberg_mrp_split	<a href="#">8621</a>	<a href="#">721</a>	issue 721 change the test to ignore the order of lines after split
2013-04-30-15-28-44	addons	kjellberg_report_account	<a href="#">8603</a>	<a href="#">1391</a>	[Fix] Alloy surcharges are shown in invoice now. issue 1391
2013-04-25-23-33-48	addons	kjellberg_stock_move_sequence	<a href="#">8726</a>	<a href="#">721</a>	issue 721 fixes typing error
2013-04-26-21-47-48	addons	kjellberg_stock_move_sequence	<a href="#">8727</a>	<a href="#">721</a>	issue 721 Add field 'sequence' in table purchase_order_line
2013-04-29-17-41-25	addons	kjellberg_product_uomconvert	<a href="#">8642</a>	<a href="#">721</a>	fixes 721 add feature of xline in onchange function product_id_change()

- Mail notifications are sent to developers to inform about integration results
- Change sets reference issues (tickets) in commit messages, in the integration log (ILOG), in the release engineering log (RELOG), in the release notes
- Change sets have a release label
- Release versions are tagged and committed
- Each module has a version number
- OpenERP offers a module/version menu



- Many changes from the OpenERP 7.0 code base
- How to separate the incoming changes
- Conflict resolution is not fully implemented
- Test coverage has to be increased
- Automatic GUI test
- More IT integration tests for LDAP, Email, Webshop ...
- Bazaar: traceability and redmine integration is insufficient



Thank you for your attention!

Questions?